

**PLAT OF
LOT 2 THRU LOT 27 OF BLOCK 5, LOT 1R AND LOT 2 THRU LOT 8 OF BLOCK 6,
JIM STREET, CLEMENTINE COURT AND HAZELNUT LANE DEDICATED PUBLIC RIGHT OF WAY,
ORCHARD MEADOWS SUBDIVISION
(formerly a portion of The Unplatted Balance of the W1/2 of the SE1/4 of Section 9)
LOCATED IN SECTION 9, T1N, R8E, B.H.M.,
RAPID CITY, PENNINGTON COUNTY, SOUTH DAKOTA.**

CURVE TABLE					
CURVE	LENGTH	RADIUS	DELTA	CHORD BEARING	CHORD DISTANCE
C1	8.89	49.00	010°23'59"	N09°28'46"E	8.88
C2	7.54	67.00	006°26'42"	S82°56'10"E	7.53
C3	8.00	67.01	006°50'41"	N89°58'14"E	8.00
C4	91.14	59.00	088°30'11"	S42°17'47"W	82.34
C5	75.13	59.00	072°57'53"	N38°26'15"W	70.16
C6	39.28	30.00	075°01'24"	N37°24'30"W	36.54
C7	37.64	59.00	036°33'07"	S61°26'26"E	37.00
C8	33.43	59.00	032°27'50"	S26°55'57"E	32.98
C9	11.13	59.00	010°48'14"	S05°17'55"E	11.11
C10	36.67	30.00	070°01'57"	S34°54'47"E	34.43
C11	86.81	52.00	095°39'15"	S22°06'08"E	77.08
C12	48.42	52.00	053°20'54"	S52°23'56"W	46.69
C13	9.24	60.00	008°49'24"	N83°29'05"E	9.23
C14	9.24	60.00	008°49'24"	S87°41'30"E	9.23
C15	24.31	52.00	026°47'08"	S69°53'14"E	24.09
C16	28.11	52.00	030°58'35"	S41°00'23"E	27.77
C17	21.14	52.00	023°17'43"	S13°52'15"E	21.00
C18	89.57	114.31	044°53'42"	N25°52'21"W	87.29
C19	13.22	114.31	006°37'27"	N51°37'56"W	13.21
C20	74.45	296.86	014°22'07"	N51°08'13"W	74.25

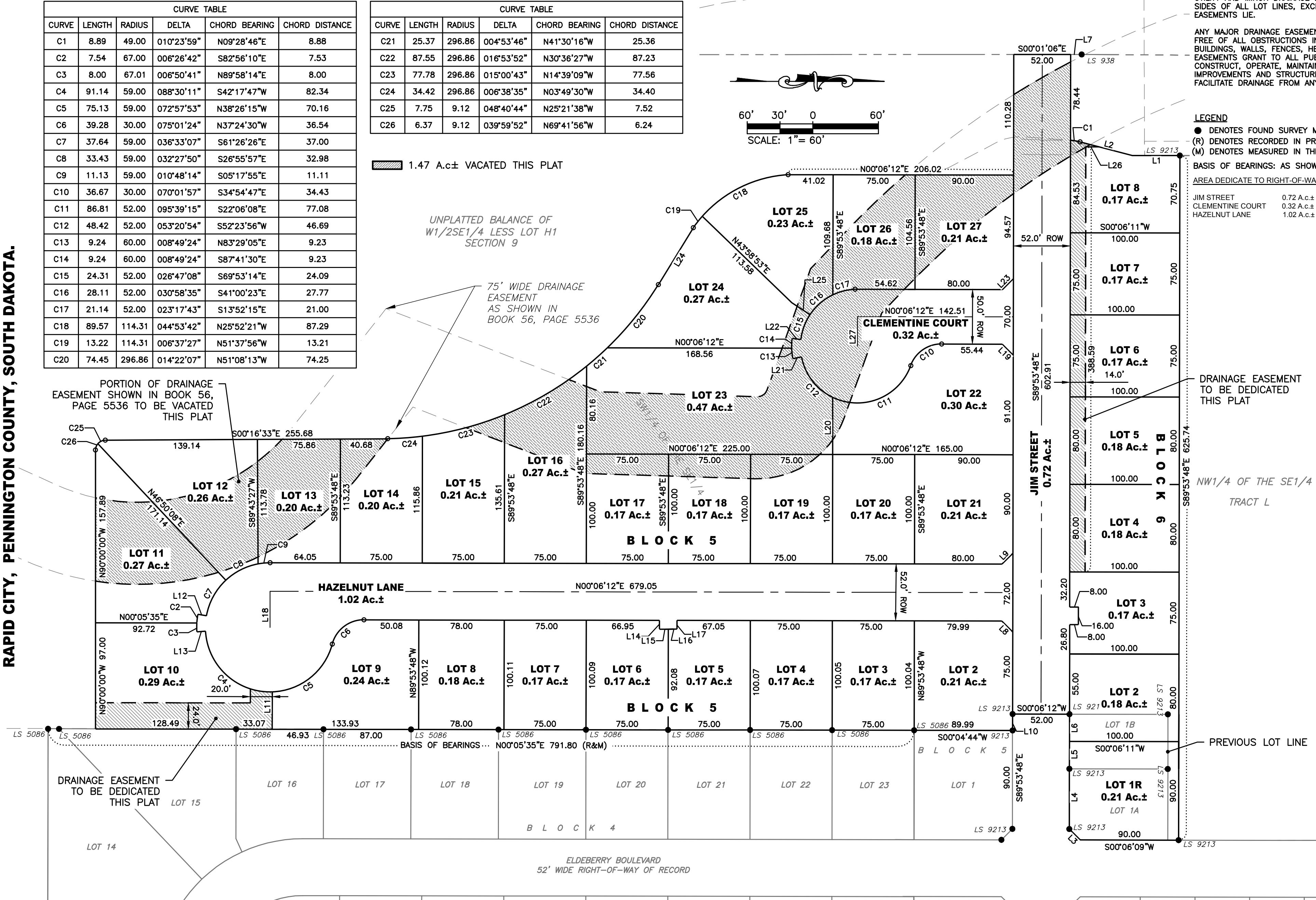
CURVE TABLE					
CURVE	LENGTH	RADIUS	DELTA	CHORD BEARING	CHORD DISTANCE
C21	25.37	296.86	004°53'46"	N41°30'16"W	25.36
C22	87.55	296.86	016°53'52"	N30°36'27"W	87.23
C23	77.78	296.86	015°00'43"	N14°39'09"W	77.56
C24	34.42	296.86	006°38'35"	N03°49'30"W	34.40
C25	7.75	9.12	048°40'44"	N25°21'38"W	7.52
C26	6.37	9.12	039°59'52"	N69°41'56"W	6.24

1.47 A.c± VACATED THIS PLAT

UNPLATTED BALANCE OF
W1/2SE1/4 LESS LOT H1
SECTION 9

75' WIDE DRAINAGE
EASEMENT
AS SHOWN IN
BOOK 56, PAGE 5536

PORTION OF DRAINAGE
EASEMENT SHOWN IN BOOK 56,
PAGE 5536 TO BE VACATED
THIS PLAT



UTILITY AND MINOR DRAINAGE EASEMENTS: 8' ON THE INTERIOR SIDES OF ALL LOT LINES, EXCEPT WHERE MAJOR DRAINAGE EASEMENTS LIE.

ANY MAJOR DRAINAGE EASEMENT SHOWN HEREON SHALL BE KEPT FREE OF ALL OBSTRUCTIONS INCLUDING BUT NOT LIMITED TO BUILDINGS, WALLS, FENCES, HEDGES, TREES AND SHRUBS. THESE EASEMENTS GRANT TO ALL PUBLIC AUTHORITIES THE RIGHT TO CONSTRUCT, OPERATE, MAINTAIN, INSPECT, AND REPAIR SUCH IMPROVEMENTS AND STRUCTURES AS IT DEEMS EXPEDIENT TO FACILITATE DRAINAGE FROM ANY SOURCE.

LEGEND

- DENOTES FOUND SURVEY MONUMENT AS NOTED.
- (R) DENOTES RECORDED IN PREVIOUS PLAT OR DESCRIPTION.
- (M) DENOTES MEASURED IN THIS SURVEY.

BASIS OF BEARINGS: AS SHOWN HEREON

AREA DEDICATE TO RIGHT-OF-WAY:

JIM STREET	0.72 A.c±
CLEMENTINE COURT	0.32 A.c±
HAZELNUT LANE	1.02 A.c±

LINE TABLE		
LINE #	LENGTH	DIRECTION
L1	43.44	N00°00'36"E
L2	49.38	N14°38'57"E
L3	14.14	S45°06'12"W
L4	54.99	N89°53'48"W
L5	25.01	N89°53'48"W
L6	25.00	N89°53'48"W
L7	10.15	N00°40'36"W
L8	14.14	N45°06'12"E
L9	14.14	S44°53'44"E
L10	15.00	N89°53'48"W
L11	34.18	N89°54'25"W
L12	8.02	S10°17'01"W
L13	8.00	N03°27'08"W
L14	8.00	N89°46'25"E
L15	8.00	N00°13'36"W
L16	8.00	N00°13'36"W
L17	7.94	S89°46'25"W
L18	33.00	N89°53'48"W
L19	14.14	N45°06'00"E
L20	52.12	N89°53'48"W
L21	8.00	S10°55'37"E
L22	8.00	S06°43'12"W
L23	14.14	S44°53'59"E
L24	61.08	N58°26'00"W
L25	20.00	N33°30'19"E
L26	11.90	N00°00'35"E
L27	27.00	N89°53'48"W

