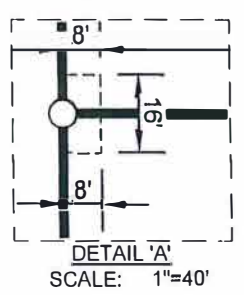
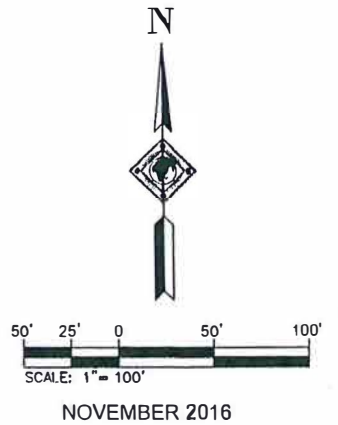
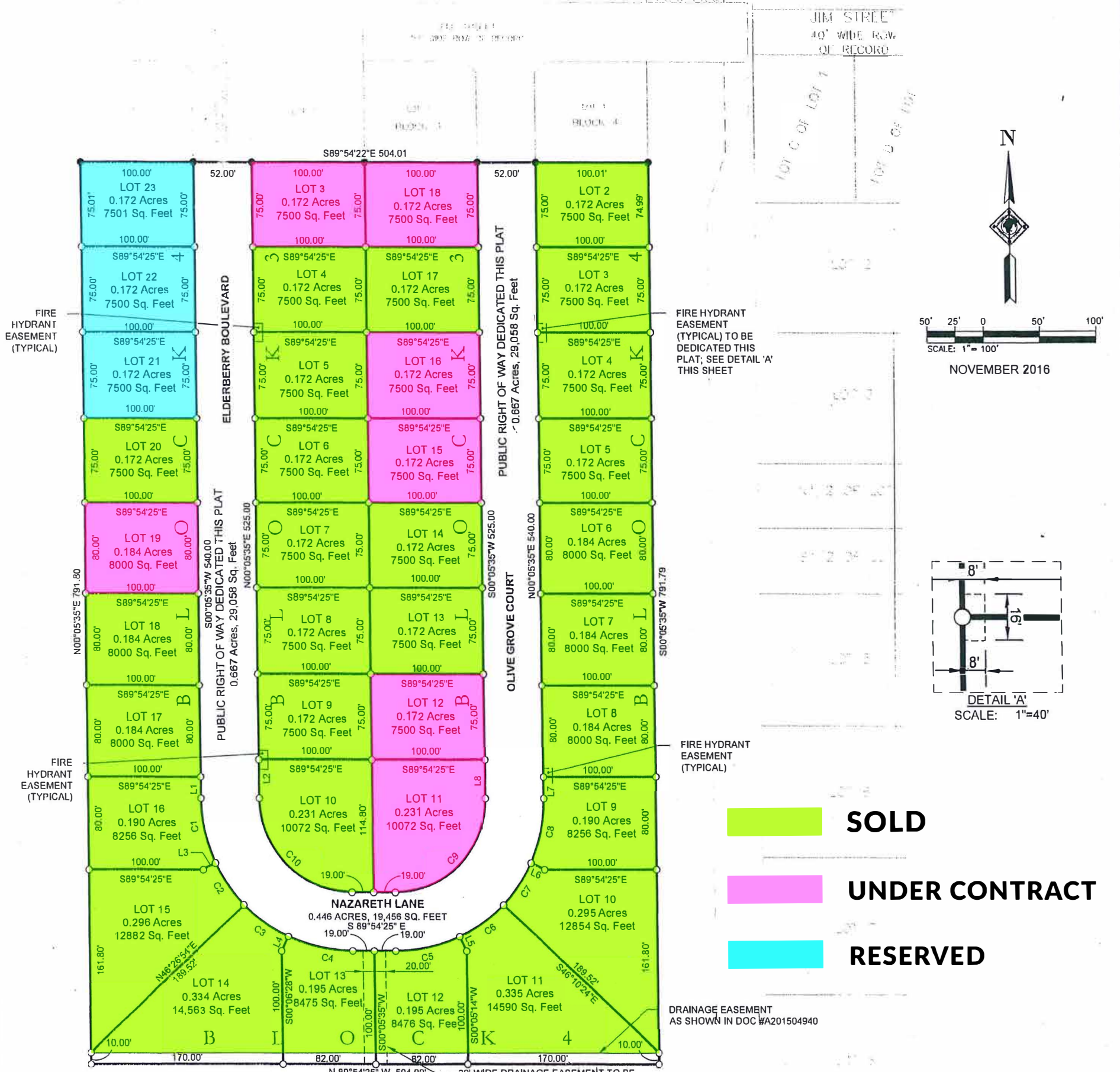


**PLAT OF LOTS 3, 4, 5, 6, 7, 8, 9, 10, 11, 12, 13, 14, 15, 16, 17, 18 OF BLOCK 3,
 LOTS 2, 3, 4, 5, 6, 7, 8, 9, 10, 11, 12, 13, 14, 15, 16, 17, 18, 19, 20, 21, 22, 23 OF BLOCK 4,
 AND DEDICATED PUBLIC RIGHT OF WAY,
 OF ORCHARD MEADOWS,
 ALL FORMERLY A PORTION OF THE W1/2,SE1/4 OF SECTION 9,
 T.1N., R.8E., B.H.M., CITY OF RAPID CITY, PENNINGTON COUNTY, SOUTH DAKOTA.
 (SHEET 1 OF 2)**



- SOLD**
- UNDER CONTRACT**
- RESERVED**

CURVE TABLE

CURVE	LENGTH	RADIUS	DELTA	CHORD BEARING	CHORD DISTANCE
C1	57.39	133.00	024°43'28"	S12°16'09"E	56.95
C2	44.48	133.00	019°09'38"	S34°12'42"E	44.27
C3	48.24	133.00	020°46'58"	S54°11'00"E	47.98
C4	58.80	133.00	025°19'56"	S77°14'27"E	58.33
C5	58.83	133.00	025°20'30"	N77°25'20"E	58.35
C6	48.52	133.00	020°54'01"	N54°18'05"E	48.25
C7	44.18	133.00	019°02'02"	N34°20'03"E	43.98
C8	57.39	133.00	024°43'28"	N12°27'19"E	56.95
C9	127.23	81.00	090°00'00"	S45°05'35"W	114.55
C10	127.23	81.00	090°00'00"	N44°54'25"W	114.55

LINE TABLE

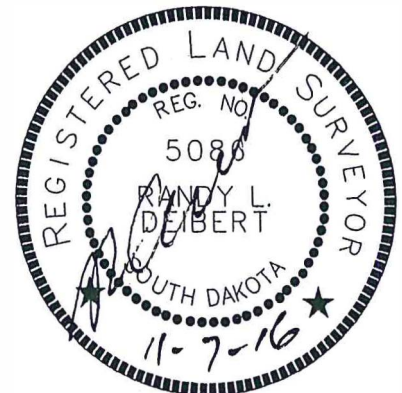
LINE #	LENGTH	DIRECTION
L1	18.80	S00°05'35"W
L2	33.80	N00°05'35"E
L3	13.41	N65°31'48"E
L4	14.16	N25°28'32"E
L5	14.16	N25°15'33"W
L6	13.41	N65°20'38"W
L7	18.80	S00°05'35"W
L8	33.80	S00°05'35"W

NOTES:

1. UTILITY AND MINOR DRAINAGE EASEMENTS: 8' ON THE INTERIOR SIDES OF ALL LOT LINES,
2. UTILITY AND MINOR DRAINAGE EASEMENT TO GO AROUND ANY FIRE HYDRANT EASEMENTS.
3. FIRE HYDRANT EASEMENTS DEDICATED SOLELY FOR THE FIRE HYDRANT & APPURTENANCES. THERE SHALL BE NO OVERLAPPING EASEMENTS ACROSS SAID FIRE HYDRANT EASEMENTS.
4. ANY MAJOR DRAINAGE, WATER MAIN, OR SANITARY SEWER EASEMENT SHOWN HEREON SHALL BE KEPT FREE OF ALL OBSTRUCTIONS INCLUDING BUT NOT LIMITED TO BUILDINGS, WALLS, FENCES, HEDGES, TREES, AND SHRUBS. THESE EASEMENTS GRANT TO ALL PUBLIC AUTHORITIES THE RIGHT TO CONSTRUCT, OPERATE, MAINTAIN, INSPECT, AND REPAIR SUCH IMPROVEMENTS AND STRUCTURES AS IT DEEMS EXPEDIENT TO FACILITATE DRAINAGE FROM ANY SOURCE.

LEGEND:

- DENOTES SET 5/8" REBAR WITH SURVEY CAP MARKED "RLD 5086"
 - DENOTES FOUND SURVEY MONUMENT, MARKED "RENNER-ASSOC 9213", UNLESS OTHERWISE NOTED
- BASIS OF BEARINGS: FROM PREVIOUS PLATS GEODETIC NORTH AS DETERMINED BY GLOBAL POSITIONING SYSTEM. (GPS) WGS84



PREPARED BY:
PROFESSIONAL MAPPING & SURVEYING, LLC
 1715 SCOTT AVENUE, SPEARFISH, SD 57783
 605-722-8133



PREPARED FOR:
DREAM DESIGN INTERNATIONAL, INC
 528 KANSAS CITY STREET, RAPID CITY, SD 57701
 605-348-0538